

HEATSTAR

by ENERCO

TENT & CONSTRUCTION HEATERS

NOMAD



REAL. TOUGH. HEAT.

SINGLE FUEL (LP) + DUAL FUEL (NG/LP) TENT & CONSTRUCTION HEATERS



HEATERS

STANDARD FEATURES:

- Whisper Quiet Operation
- Multi-Rate Heat Settings - High/Low
- Higher CFM
- Easy Reset High Limit Switch
- Choose Rate and Fuel with Flip of a Switch
- Flexible Diffuser Connector System
- Certified

Model Number	Single Fuel	Dual Fuel	Single Fuel	Dual Fuel	Single Fuel	Dual Fuel
	HS115SF	HS115TC	HS190SF	HS190TC	HS250SF	HS250TC
Stock Number	F109200	F109100	F109210	F109110	F109220	F109120
BTU's Low Setting	81,000 LP	77 NG / 81 LP	127,000 LP	129 NG / 127 LP	181,000 LP	172 NG / 181 LP
BTU's High Setting	111,000 LP	108 NG / 111 LP	190,000 LP	184 NG / 190 LP	249,000 LP	249 NG / 249 LP
Heating Area (SQ. FT.)	2875		4750		6250	
Electric	115V 3.6 amps		115V 5.5 amps		115V 9.1 amps	
L x W x H Dimensions	35.8" x 20.3" x 34.8"		35.8" x 20.3" x 34.8"		35.8" x 20.3" x 34.8"	
Weight	91 lbs.		159 lbs.		165 lbs.	
Thermostat	Thermostat with 20' Cord (standard)		Thermostat with 20' Cord (standard)		Thermostat with 20' Cord (standard)	
Ignition	Spark		Spark		Spark	
Gas House	15' Hose & Regulator (standard)		15' Hose & Regulator (standard)		15' Hose & Regulator (standard)	

BOX HEATER ACCESSORIES

Diffuser Kits	Item Kits	Description
Diffuser kit for HS115TC (SF)	F109105	12" diameter, comes with (1) 12" connector ring
Diffuser kit for HS190TC (SF) or HS250TC (SF)	F109115	16" diameter, comes with (1) 16" connector ring
Adapter Rings		
Duct adapter ring for HS115TC (SF)	F109106	12" diameter connector ring
Duct adapter ring for HS190TC (SF) or HS250TC (SF)	F109116	12" diameter connector ring
Ducts		
Short duct for HS115TC (SF)	F109107	30" siliconized flex duct, 12" diameter
Short duct for HS190TC (SF) or HS250TC (SF)	F109117	30" siliconized flex duct, 16" diameter
Long duct for HS115TC (SF)	F109108	10' siliconized flex duct, 12" diameter
Long duct for HS190TC (SF) or HS250TC (SF)	F109118	10' siliconized flex duct, 16" diameter
Storage		
Painted steel storage box for HS190TC (SF)/HS250TC (SF)	F109119	31 1/4" x 20 1/4" x 10" box w/lock hasp

Accessory set up options	
Option 1	Connect nothing, run heater by itself
Option 2	Adapter ring - 30" short duct -adapter ring- diffuser
Option 3	Adapter ring - 10' long duct
Option 4	Adapter ring - 10' long duct -adapter ring- diffuser
Option 5	Adapter ring - 30" short duct

**STORAGE BOX FITS EITHER
HS190 OR HS250 MODEL**



12" FITS ALL HS115 MODELS

12" DUCT ADAPTER (F109106)



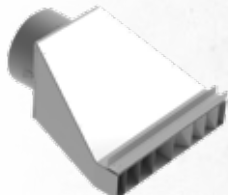
12" X 30" TRANSITION DUCT (F109107)



12" X 10' FLEXIBLE DUCT (F109108)



12" UNIVERSAL DIFFUSER (F109105)



16" FITS EITHER HS190 OR HS250 MODEL

16" DUCT ADAPTER (F109116)



16" X 30" TRANSITION DUCT (F109117)



16" X 10' FLEXIBLE DUCT (F109118)



16" UNIVERSAL DIFFUSER (F109115)

